

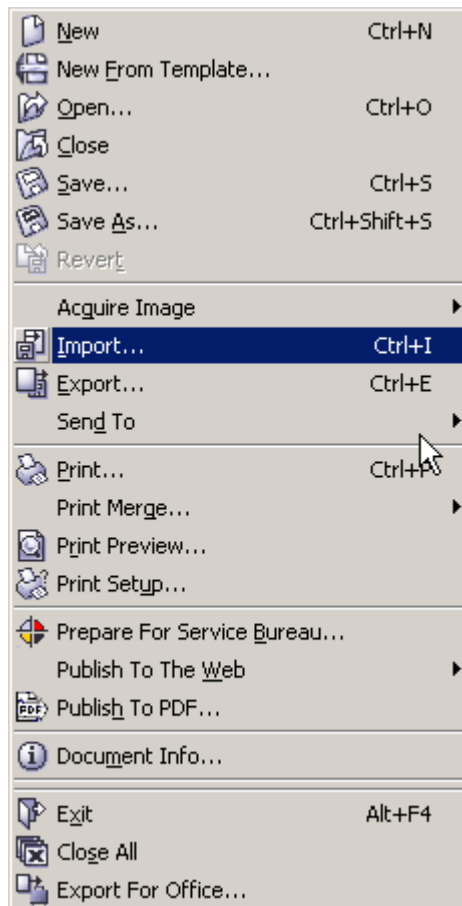
Summa

**Using CorelDraw to create
a FotoCut job.**

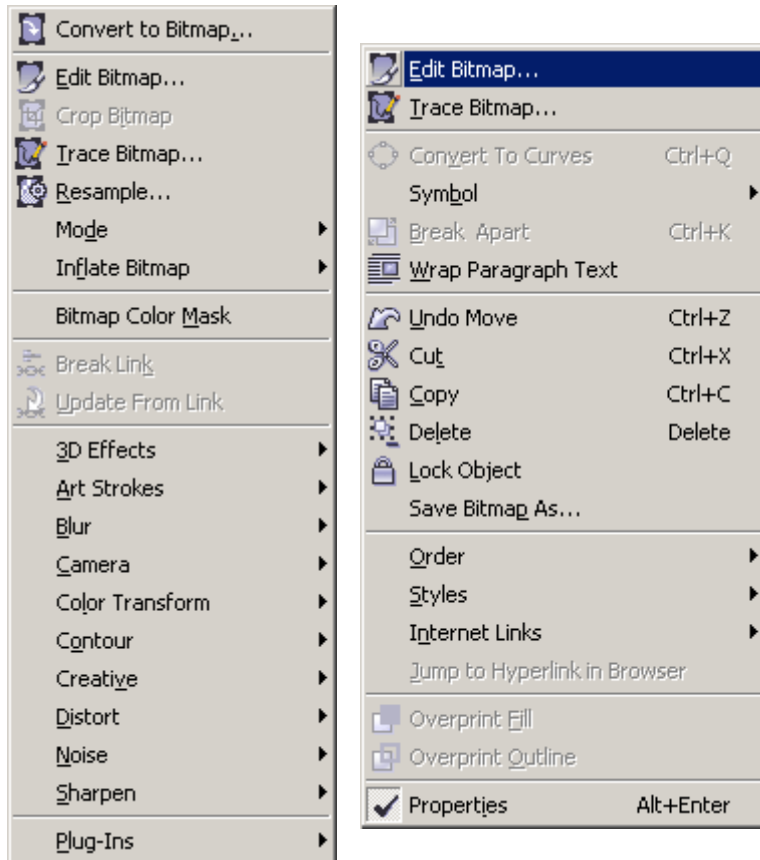
Creating 'FotoCut' with Corel 12 Graphics Suite

Preparing your image

1. Start CorelDraw 12 and import your file
Select "File/Import" or "Ctrl+I", then select your file from the explorer window.

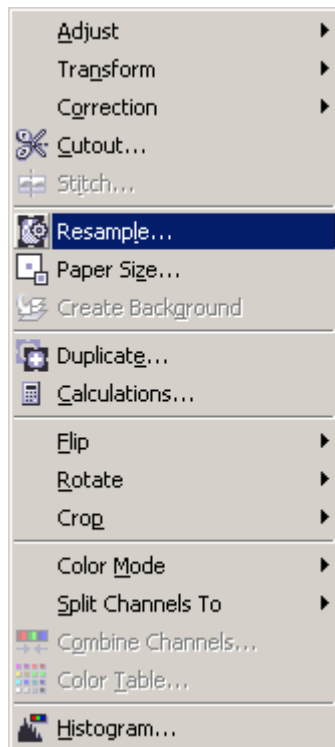


2. Once CorelDraw has imported your file select it on screen and edit the Bitmap. Do this by entering "Bitmap/Edit Bitmap ...", or by right-clicking the image and selecting "Edit Bitmap ...".

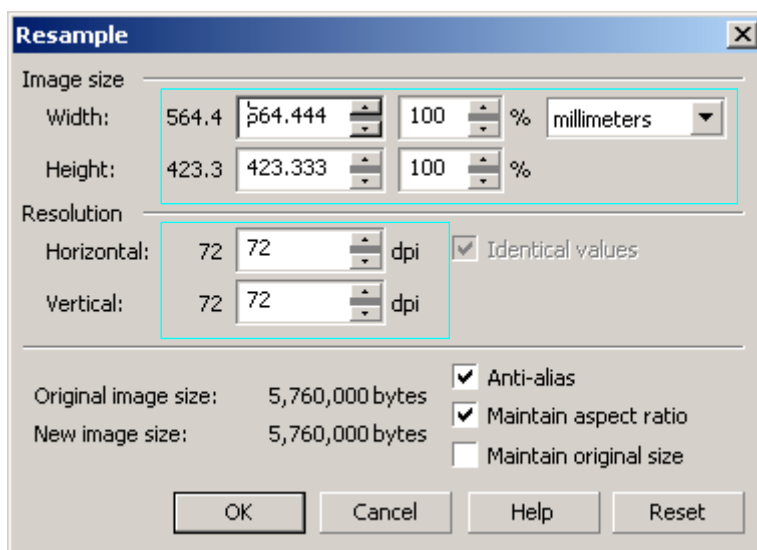


This will start up Corel Photopaint.

3. In CorelPaint Menu: "Image / Resample"



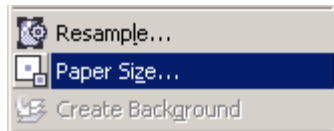
4. Set the resolution to 72dpi and the size to the wanted cutting size (preserve some extra margin for a weeding box)



***** NOTE *****

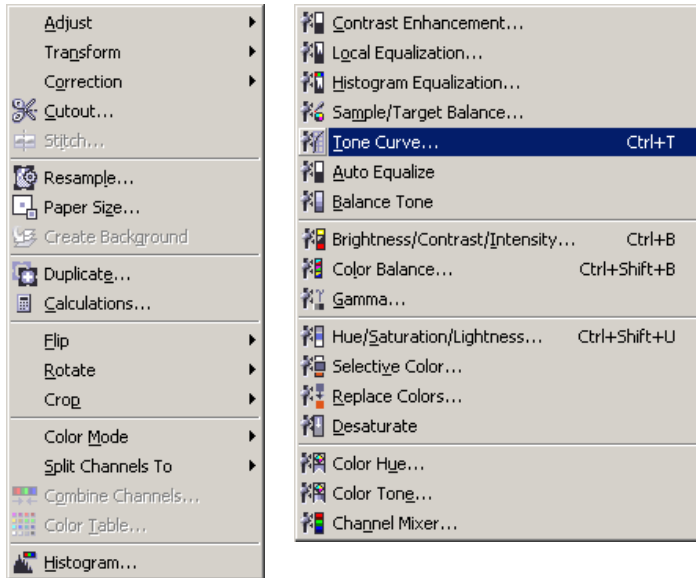
Some contrast optimisation may be required. In order to have a better feeling about the contrast . A good option to try is: Image / Adjust / Auto equalize

5. Add a border for easier weeding, to do this, select "Image / Paper Size"

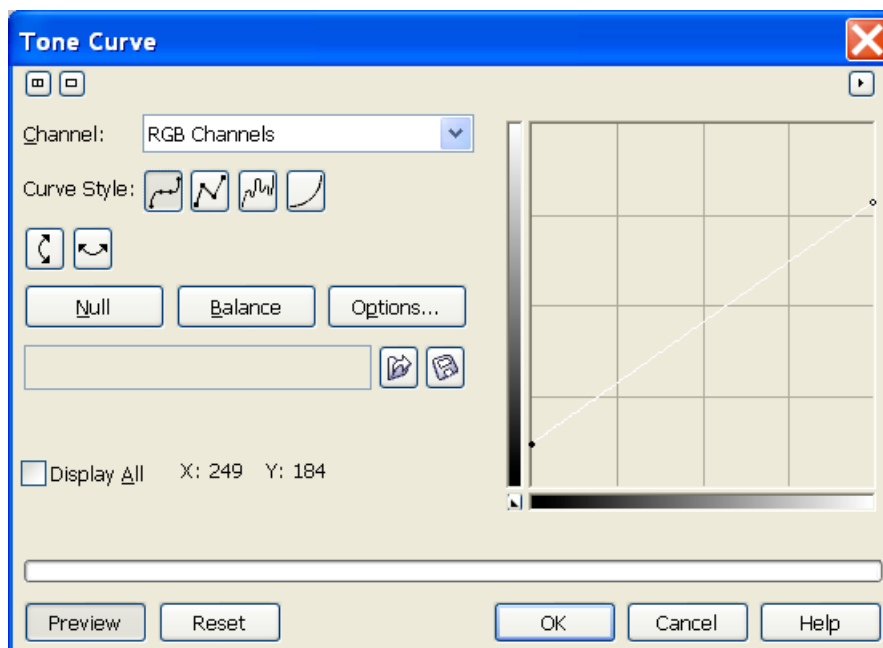


Set placement to 'centered'; background to 80% black; unlock the Width/Height constrain and Increase the height with 2cm.

- Next we'll adjust the lighter and darker areas, this way we we'll have a better contrast for the final FotoCut Stages. Go to following menu "Image / Adjust / Tone Curve's"

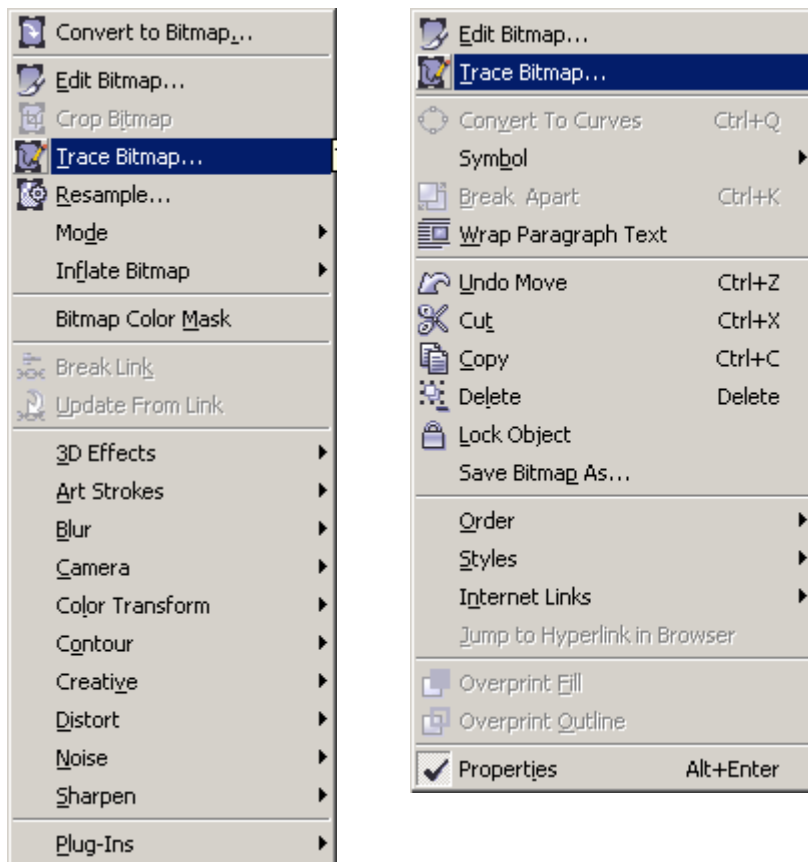


Drag the curve as follows: X:0 ; Y:30 and X:255 ; Y: 200



- Close the image in CorelPaint and save.

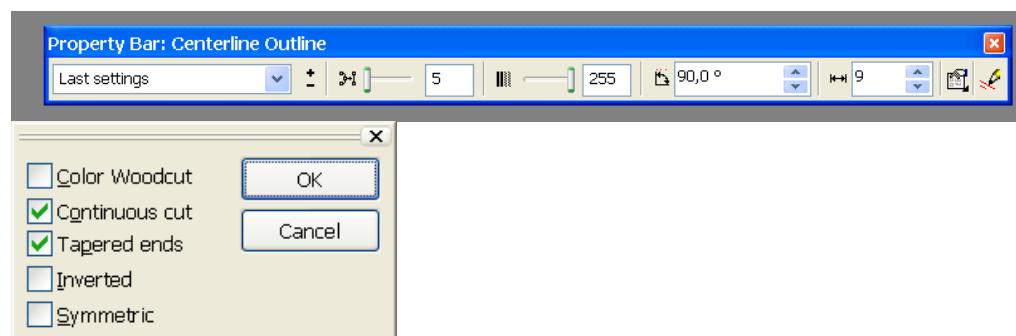
8. Now lets trace the Bitmap to create a vector file to cut out on a plotter. Do this by entering "Bitmap/Trace Bitmap ...", or by right-clicking the image and selecting "Trace Bitmap.."



9. In CorelTrace Select WoodCut

10. Set following woodcut options:

- Node reduction : 5
- Threshold: 255
- Angle: 90°
- Width: 9
- Continous Cut : On
- Tapered Ends : On

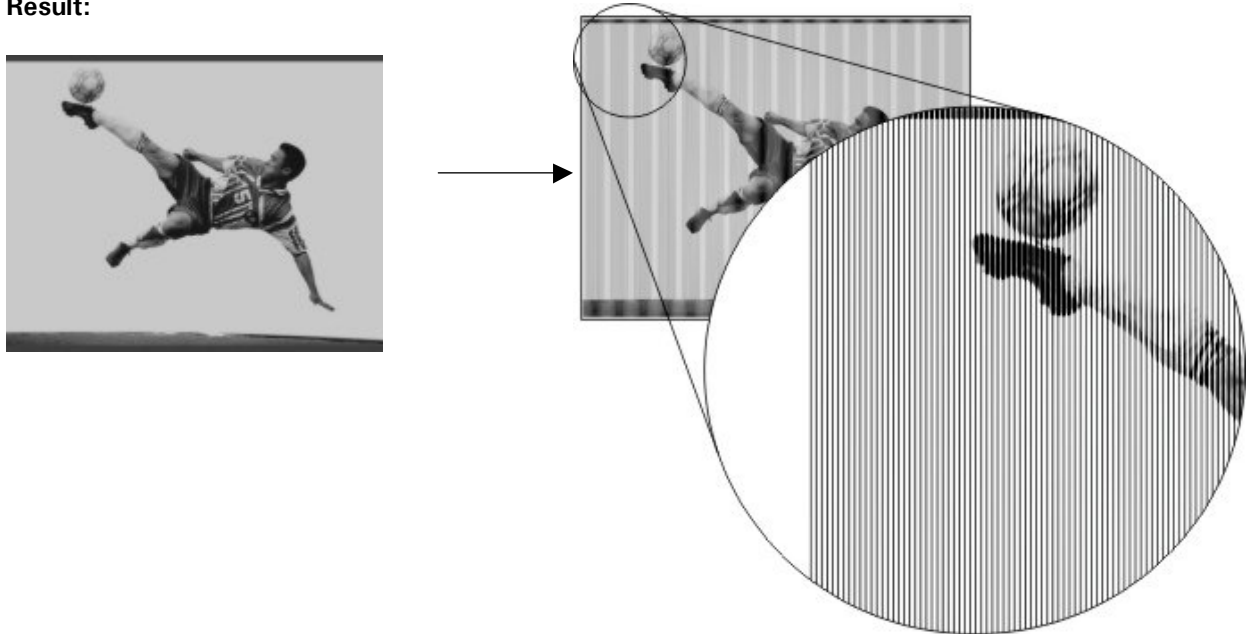


11. Perform the WoodCut

12. "File / Save Trace result"

13. Import the trace result in CorelDraw
14. Draw a rectangle exactly around the image
15. Reduce the height of the rectangle with 0,5cm
16. With the rectangle selected: In shaping select 'intersect' (leave source object) and target the image
17. Select the rectangle and increase width and height with 0,5cm
18. Add some extra lines at the top and bottom for easy weeding

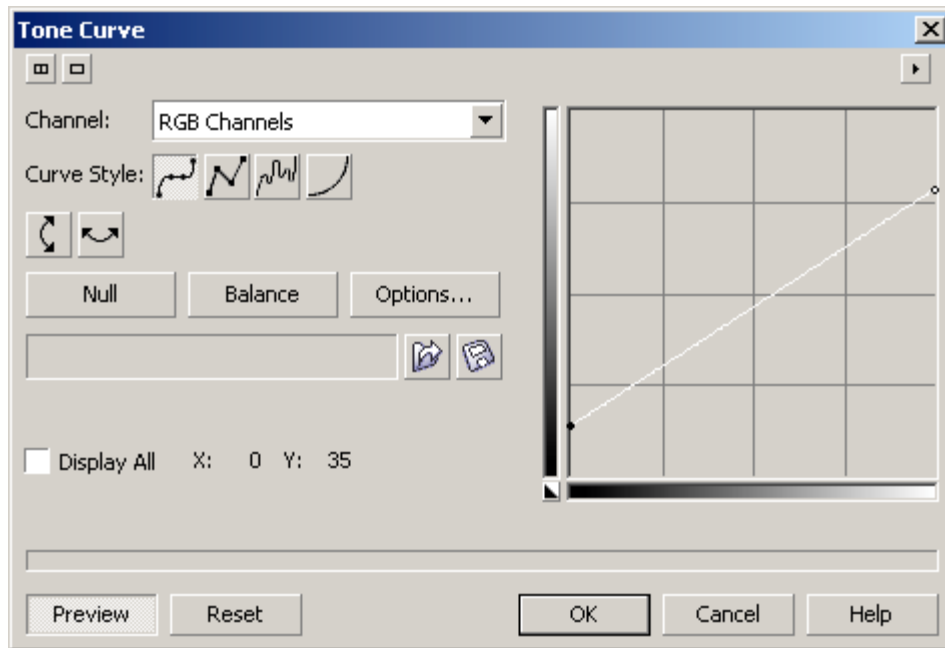
Result:



Creating a FotoCut job under 45°

To prevent repetition I will just deal with the steps that will change.

5. Add a border for easier weeding, to do this, select "Image / Paper Size"
Set placement to 'centered'; background to 80% black; unlock the Width/Height constrain and Increase the **width** and height with 2cm.
6. Next we'll adjust the lighter and darker areas, this way we we'll have a better contrast for the final FotoCut Stages. Go to following menu "Image / Adjust / Tone Curve's"
Drag the curve as follows: X:0 ; Y:35 and X:255 ; Y: 200



10. Set following woodcut options:

- Node reduction : 10
- Threshold: 255
- Angle: 45°
- Width: 8
- Continuous Cut : On
- Tapered Ends : On



14. Draw a rectangle exactly around the image

15. Reduce the width and height of the rectangle with 0,5cm

16. With the rectangle selected: In shaping select 'intersect' (leave source object) and target the image

17. Select the rectangle and increase width and height with 0,5cm

Result:

