

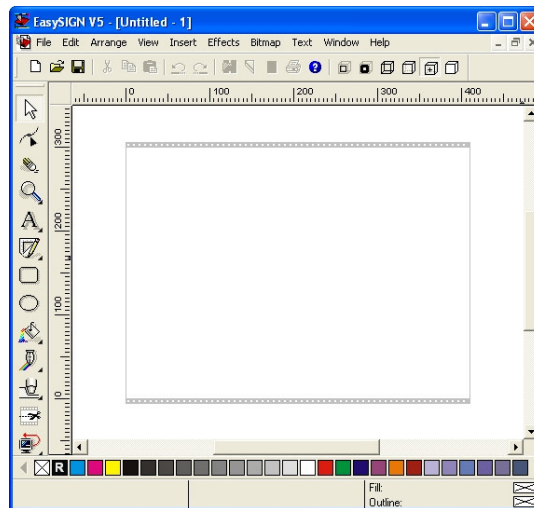
Summa

Installing a Summa Cutter in EasySign V5

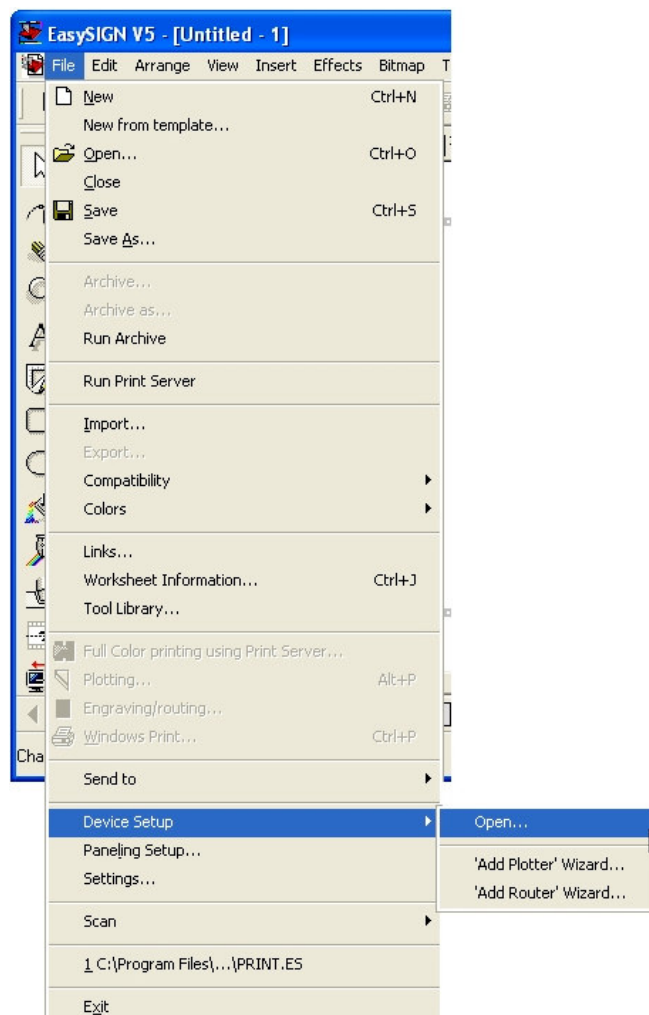
There are two ways of installing a cutter, both of which are explained in this Tutorial

Possibility 1

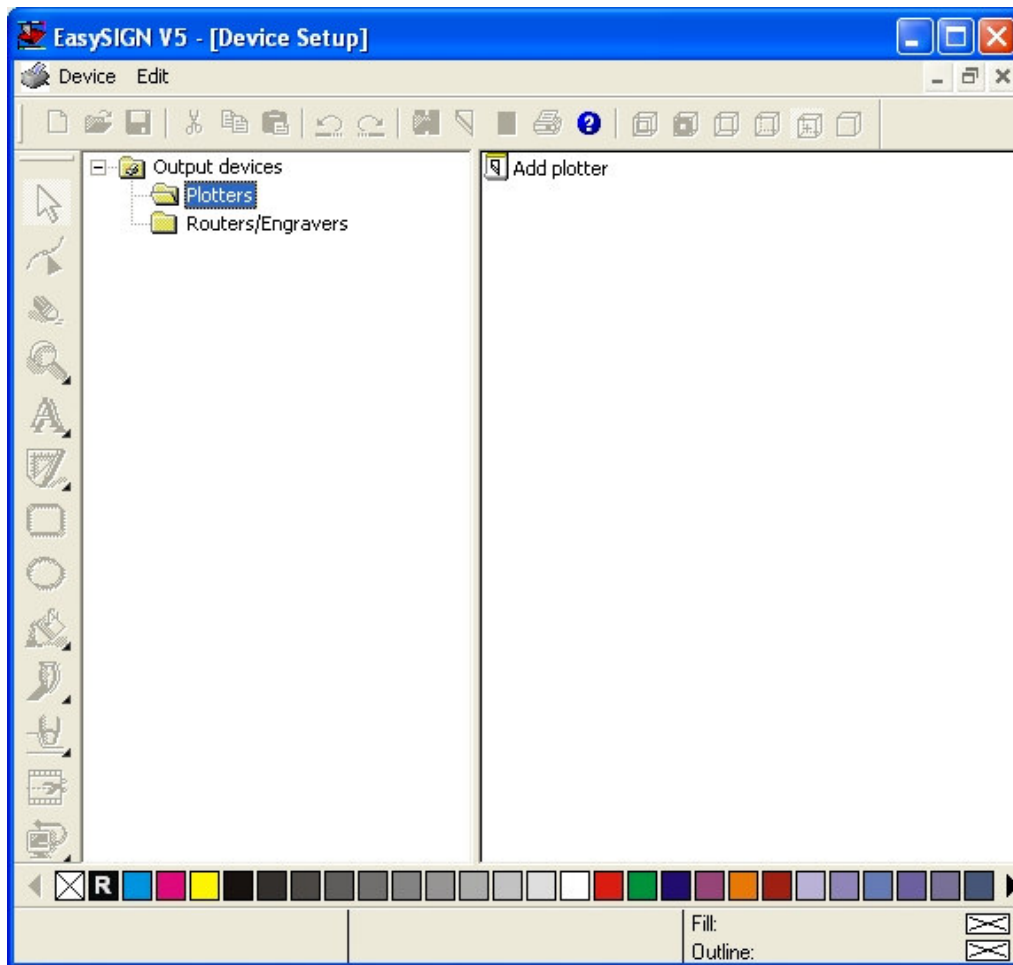
1. Start Easysign and make sure a new document is open



2. Select **File** -> **Device Setup** -> **Open...** to open up your EasySign Device panel

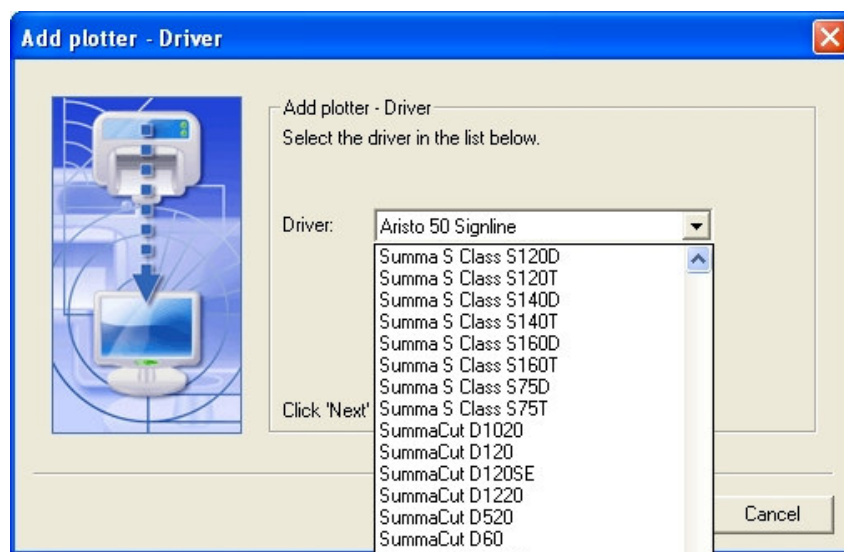


3. In the device setup panel, select the **plotters** folder.

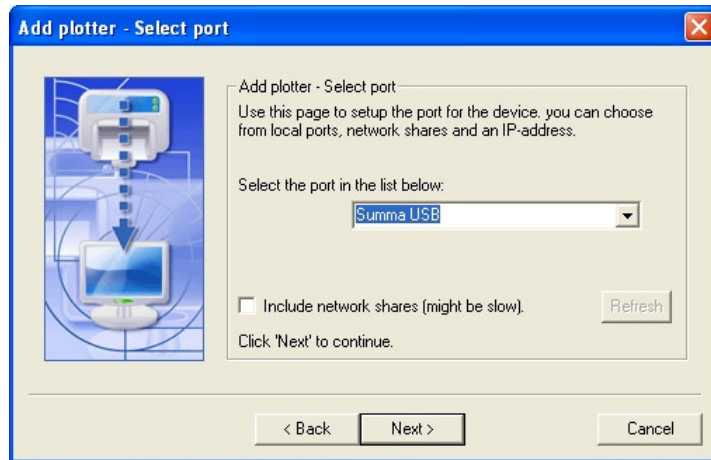


Select Add plotter to bring up the plotter installation wizard.

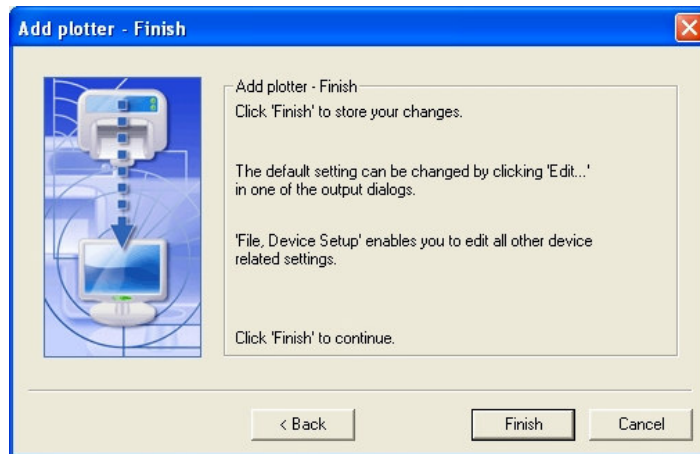
4. In the Add plotter pop up select the Summa plotter you want to install and click on the **Next** button.



5. The next pop up will let you setup the communication port
Depending on how you connect the cutter to your PC you will have to select a different port, see your machines manual for more information on communication settings of your cutter. (in our example I will select the Summa USB driver). Select **Next** when finished.

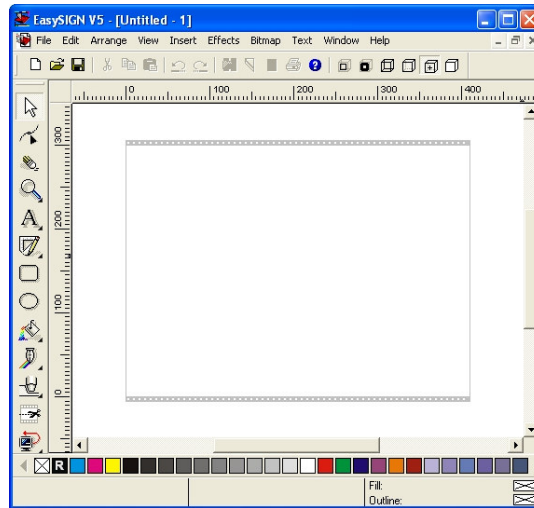


Select **Finish** to complete the setup.

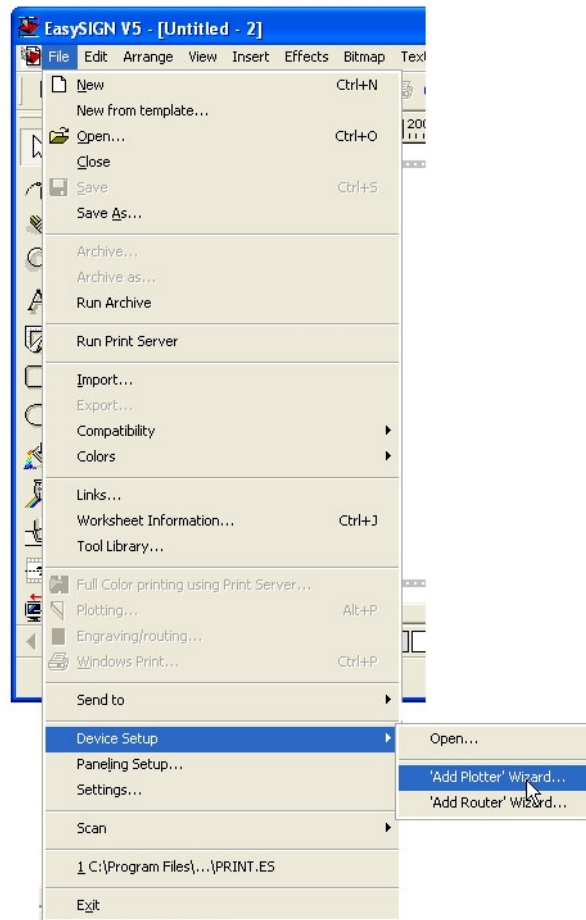


Possibility 2

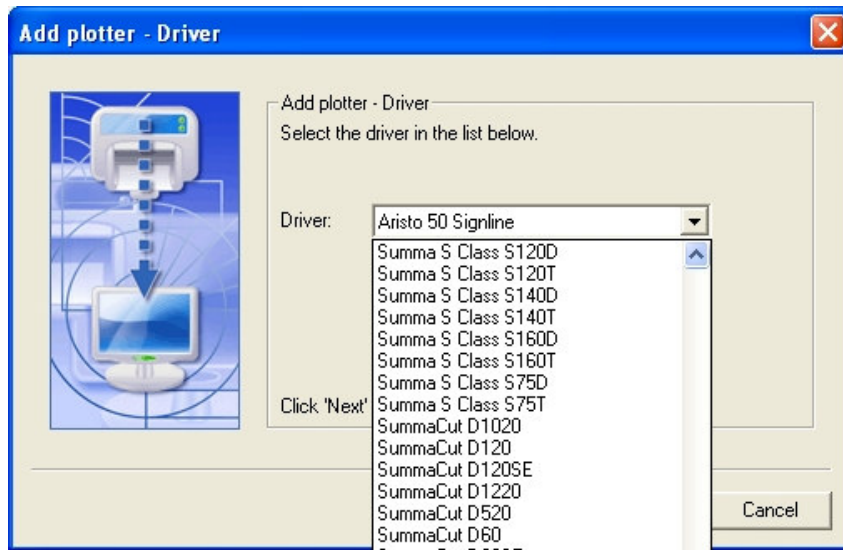
1. Start Easysign and make sure a new document is open



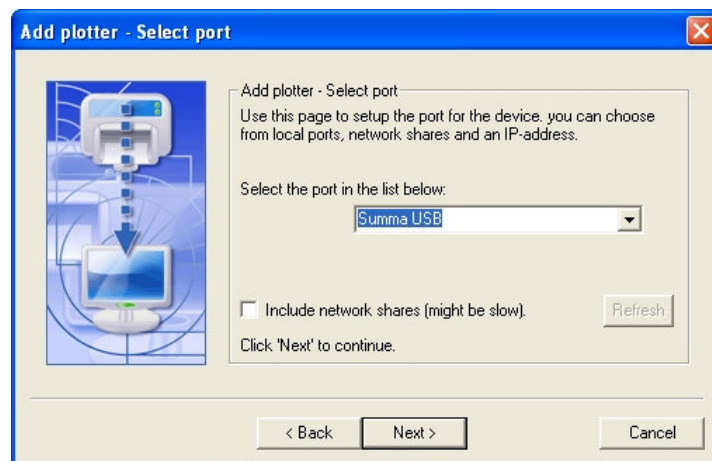
2. Select **File** -> **Device Setup** -> **'Add Plotter' Wizard ...** to open up your EasySign Device panel



3. In the Add plotter pop up select the Summa plotter you want to install and click on the **Next** button.



4. The next pop up will let you setup the communication port. Depending on how you connect the cutter to your PC you will have to select a different port, see your machines manual for more information on communication settings of your cutter. (in our example I will select the Summa USB driver). Select **Next** when finished.



Select **Finish** to complete the setup.

